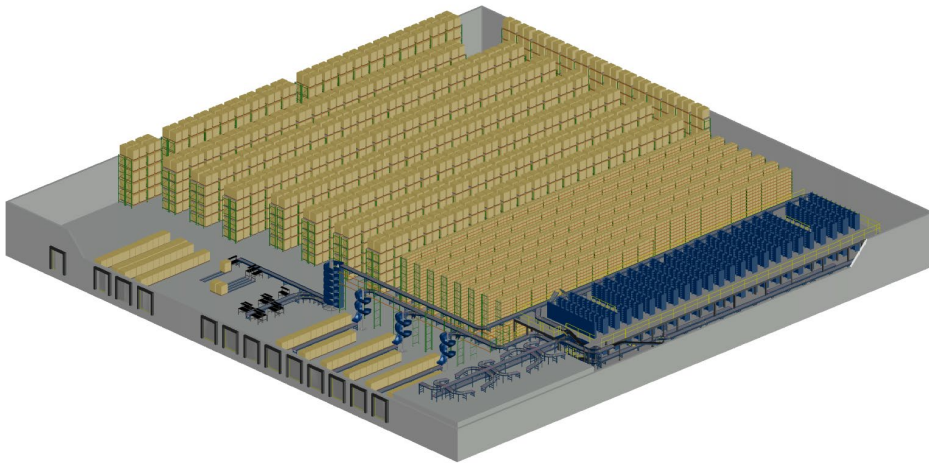


Distribution Performance Solutions *Insights*

Vallen: Case Study for a DC Retrofit



Distribution Performance Solutions *Insights*

Vallen: Case Study for a DC Retrofit

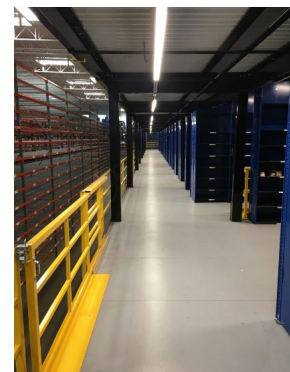
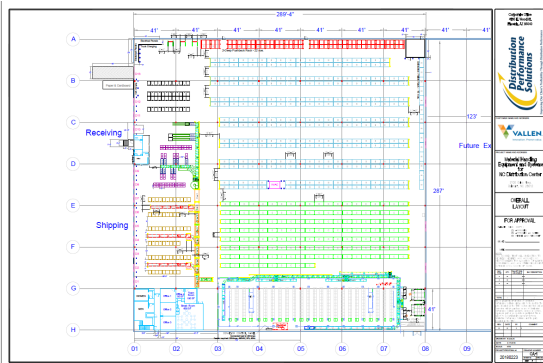
Vallen, a division of Sonepar, is a leading provider of industrial supplies, from safety equipment to abrasives & chemicals to a wide range of tools and related accessories. Vallen covers the vast majority of their customers maintenance, repair, operations and production related needs through a network of distribution centers throughout the nation.

As part of a strategy involving a regional distribution center (DC) based network model, Vallen consolidated multiple distribution centers into their flagship operation in Belmont, North Carolina. Leveraging the existing Belmont facility and infrastructure without expansion, and ensuring minimized disruption to existing business, the goals for this project were to:

1. **Increase storage capacity by 33%.**
2. **Increase lines per hour productivity by 40%.**
3. **Maintain accuracy level in excess of 99.8%.**

Vallen selected Distribution Performance Solutions (DPS) as their partner for the engineering, provision, and implementation of the material handling system implemented to achieve the above business goals. The system solution was comprised of:

- **Three (3) level shelving pick-module.**
- **Vertical lift modules (VLMs).**
- **Zone-routed conveyor system.**
- **New packing operation, including sortation and pack-stations.**
- **New shipping operation, including sortation to dock-doors.**
- **High-density pallet racking.**



Distribution Performance Solutions *Insights*

Vallen: Case Study for a DC Retrofit

Following is a general overview of the systems operations:

○ Receiving and Put-Away

- Product is received and delivered to storage locations in the pick-module and VLMs via the zone-routed conveyor system.
- Received pallets are directed to a pallet rack location via the WMS and utilizing forklifts.
- Other received cartons are directed to a high-bay shelving stock-picker area for put-away.

○ Order-Picking

- Orders are started and directed by the WMS and the Warehouse Control Software (WCS) provided by DPS.
- Order picking associates pick each-unit from their zones in the pick-module and VLM's to the order containers, clustering orders for increased productivity.
- Completed orders are conveyed to the packing area.

○ Packing and QC

- Completed orders, and orders for consolidation, are directed to specific packing stations based on availability and business rules via a conveyor sortation system and WCS.
- Packing associates provide QC, dunnage, packing and labeling functions at the packing stations, which were designed for productivity, ergonomic and space utilization benefits.
- Packed cartons are placed on take-away conveyor to shipping.

○ Shipping

- Shipping cartons are scanned and diverted to shipping lanes aligned with dock doors by specific shippers.
- Shipping personnel palletize orders and load trucks accordingly.



Distribution Performance Solutions *Insights*

Vallen: Case Study for a DC Retrofit

DPS's professional approach delivered value to Vallen, including:

- **Engineering**

Vallen's existing DC was completely full without any excess space, so gaining space efficiencies to accommodate 33% more inventory was not an easy task, nor was engineering an overall solution that utilized nearly every cubic foot to the fullest throughout the facility. In addition, the integrated system had to be engineered to be implemented in an existing distribution operation without impacting the current business and customer service levels.

- **Project Management**

Implementing major material handling systems into existing distribution operations requires extreme attention to detail, thorough communications, and a tight partnership between Client and integrator partner. DPS employs professional project and site managers and utilizes industry leading best practices, which resulted in this successful implementation at for Vallen.

- **Best Overall Value**

Vallen employed a thorough competitive bid process in selecting the partner they felt best for them. DPS earned Vallen's trust and business. DPS provided the best overall value to Vallen (and other Clients) through an engineering process that minimizes costly mistakes and mitigates risk, while delivering cost savings through strong partnerships with our suppliers and cost efficiencies through a professional project management approach.



DPS provides the expertise to help our clients make the very best distribution operations decisions. We provide turnkey design and engineering, systems provision, implementation, integration and support.

To learn more about how DPS can help you improve your distribution operations call 1-855-666-4554.